

SERVICE MANUAL

Ver. 1.7 2021.01

- All the units included in the HT-RT3 (SA-WRT3, SS-RT3/SRT3, remote control) are required to confirm the operation of SA-WRT3. Check in advance that you have all the units.

Note:

Be sure to keep your PC used for service and checking of this unit always updated with the latest version of your anti-virus software. In case a virus affected unit was found during service, contact your Service Headquarters.



US Model
Canadian Model
AEP Model
UK Model
E Model
Australian Model

COMPONENT MODEL NAME

	HT-RT3
Bar Speaker (Speaker System)	SS-RT3
Surround Speaker (Speaker System)	SS-SRT3
Subwoofer (Active Subwoofer)	SA-WRT3

- The service manual for SS-RT3/SRT3 has been issued separately. Please refer to the service manual for information.

Amplifier section

US models:

POWER OUTPUT AND TOTAL HARMONIC DISTORTION: (FTC)

Front L + Front R:
With 2.5 ohms loads, both channels driven, from 200 Hz – 20,000 Hz; rated 30 watts per channel minimum RMS power, with no more than 1% total harmonic distortion from 250 milliwatts to rated output.

POWER OUTPUT (reference):

Front L/Front R/Surround L/
Surround R:
65 W (per channel at 2.5 ohms, 1 kHz)
Center:
170 W (at 4 ohms, 1 kHz)
Subwoofer:
170 W (at 4 ohms, 1 kHz)

Except US models:

POWER OUTPUT (rated)

Front L + Front R:
35 W + 35 W (at 2.5 ohms, 1 kHz, 1% THD)

POWER OUTPUT (reference)

Front L/Front R/Surround L/
Surround R:
65 W (per channel at 2.5 ohms, 1 kHz)
Center:
170 W (at 4 ohms, 1 kHz)
Subwoofer:
170 W (at 4 ohms, 1 kHz)

Inputs

USB
ANALOG IN
TV IN (OPTICAL)

Output

HDMI OUT (ARC)

HDMI section

Connector

Type A (19pin)

USB section

ψ (USB) port

Type A

BLUETOOTH section

Communication system

BLUETOOTH Specification version 4.2

Output

BLUETOOTH Specification

Power Class 1

Maximum communication range

Line of sight approx. 25 m (82 ft)¹⁾

Frequency band

2.4 GHz band (2.4000 GHz – 2.4835 GHz)

Modulation method

FHSS (Freq Hopping Spread Spectrum)

Compatible BLUETOOTH profiles²⁾

A2DP 1.2 (Advanced Audio Distribution Profile)
AVRCP 1.6 (Audio Video Remote Control Profile)

Supported Codecs³⁾

SBC⁴⁾, AAC⁵⁾

Transmission range (A2DP)

20 Hz – 20,000 Hz (Sampling frequency 32 kHz, 44.1 kHz, 48 kHz)

¹⁾ The actual range will vary depending on factors such as obstacles between devices, magnetic fields around a microwave oven, static electricity, cordless phone, reception sensitivity, antenna's performance, operating system, software application, etc.

²⁾ BLUETOOTH standard profiles indicate the purpose of BLUETOOTH communication between devices.

³⁾ Codec: Audio signal compression and conversion format

⁴⁾ Subband Codec

⁵⁾ Advanced Audio Coding

Speaker section

Speaker system

Subwoofer system, Bass reflex

Speaker

160 mm (6 3/8 in) cone type

General

Power requirements

LA9 models only:

110 V - 240 V AC, 50/60 Hz

US, CND models only:

120 V AC, 60 Hz

EA models only:

127 V - 240 V AC, 50/60 Hz

Except LA9, US, CND, EA

models:

220 V - 240 V AC, 50/60 Hz

Power consumption

(US, CND, AUS, EA, SP, AR, E12, LA9/
Former type: AEP, UK)

On: 85 W

Standby: 0.5 W or less (Power saving mode)
(When "CTRL" in "HDMI>" and "BTSTB" in "BT >" are set to "OFF")

Standby: 2.8 W or less⁶⁾
(When "CTRL" in "HDMI>" or "BTSTB" in "BT >" is set to "ON")

(New type: AEP, UK)

On: 85 W

Standby mode: 2.0 W or less
(When "CTRL" in "HDMI>" or "BTSTB" in "BT >" is set to "ON")⁶⁾

Power saving mode: 0.5 W or less
(When "CTRL" in "HDMI>" and "BTSTB" in "BT >" are set to "OFF")⁶⁾

Dimensions (w/h/d) (approx.)

190 mm × 392 mm × 315 mm

(7 1/2 in × 15 1/2 in × 12 1/2 in)

Mass (approx.)

7.8 kg (17 lb 4 oz)

⁶⁾ The system will automatically enter Power saving mode when there is no HDMI connection and no BLUETOOTH pairing history, regardless of the settings you have made for "CTRL" in "HDMI>" and "BTSTB" in "BT >".

Supplied accessories

Remote control (1)
R03 (size AAA) batteries (2)
High Speed HDMI cable (1) (E12, LA9, AR, AUS, SP, EA)
Optical digital cable (1) (US, CND, AEP, UK)
AC plug adaptor (1) (LA9)

Design and specifications are subject to change without notice.

(AEP, UK only)

Note: The specification of AEP and UK has been changed in the midway of production. Refer to "CHANGE OF MAIN BOARD AND INSTRUCTION MANUAL" on page 5 for "Former type" and "New type".

9-890-680-08

2021A33-1

© 2021.01

Sony Home Entertainment &
Sound Products Inc.

HT-RT3
HOME THEATRE SYSTEM
SA-WRT3
ACTIVE SUBWOOFER



SONY®


SECTION 6 EXPLODED VIEWS


Note:


- XX and -X mean standardized parts, so they may have some difference from the original one.
- Items marked “*” are not stocked since they are seldom required for routine service. Some delay should be anticipated when ordering these items.
- The mechanical parts with no reference number in the exploded views are not supplied.
- Color Indication of Appearance Parts Example:
KNOB, BALANCE (WHITE) . . . (RED)
↑ ↑
Parts Color Cabinet's Color

- Abbreviation
AR : Argentina model
AUS : Australian model
CND : Canadian model
E12 : 220-240 V AC area in E model
EA : Saudi Arabia model
LA9 : Latin-American model
SP : Singapore model

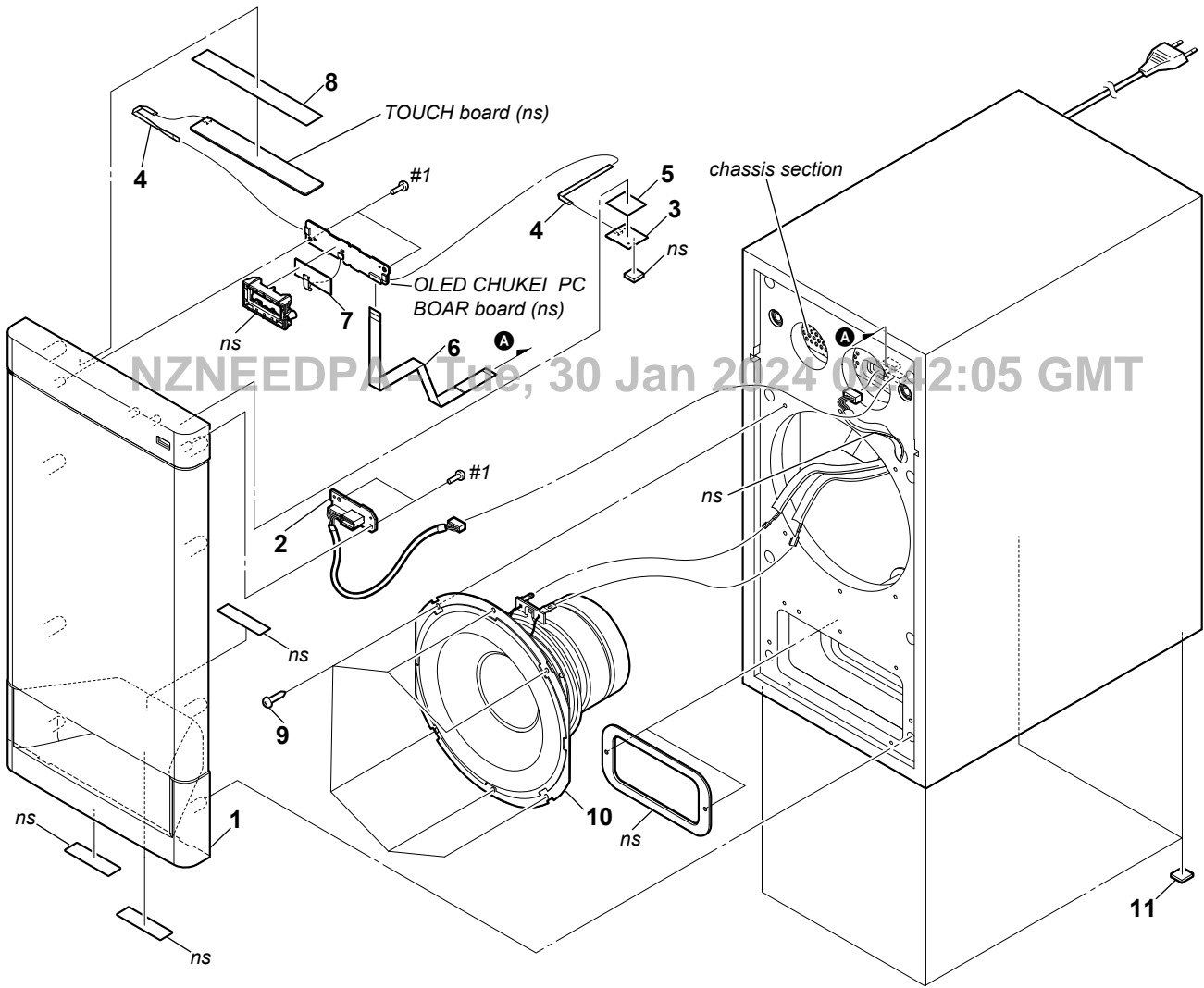
The components identified by mark  or dotted line with mark  are critical for safety.
Replace only with part number specified.

Les composants identifiés par une marque  sont critiques pour la sécurité.
Ne les remplacer que par une pièce portant le numéro spécifié.

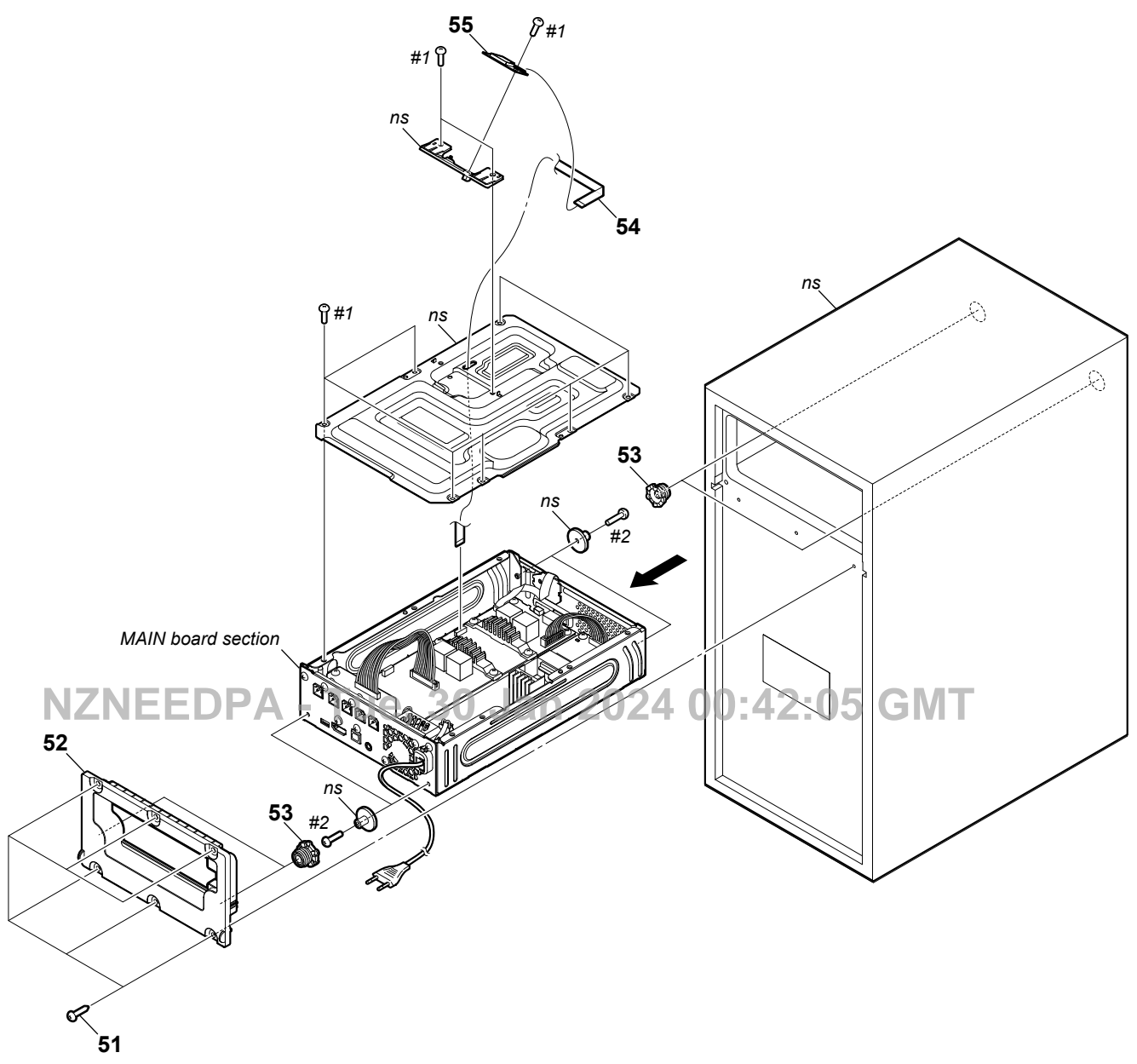
The components identified by mark  contain confidential information.
Strictly follow the instructions whenever the components are repaired and/or replaced.

Les composants identifiés par la marque  contiennent des informations confidentielles.
Suivre scrupuleusement les instructions chaque fois qu'un composant est remplacé et / ou réparé.

6-1. OVERALL SECTION



6-2. CHASSIS SECTION



HT-RT3

Ver. 1.6

6-3. MAIN BOARD SECTION

